

# Tar Heel Tailings

*A newsletter for Gem and Mineral enthusiast in and around the Raleigh, North Carolina area.*

## **Special Interest Articles:**

- President's Report
- May 2011 Field Trip Report - Wakestone Knightdale Quarry
- Upcoming Events
- Pictures for June Auction

## **Individual Highlights:**

President's Report	1
May 2011 Field Trip Report - Wakestone Knightdale Quarry	1
Treasurer's Report	2
May's Business Meeting Minutes	3
2011 Show Report	3
Pictures for June Auction	5
Upcoming Events June Field Trip	6
Upcoming Shows:	7
Vug Sites:	7

## **President's Report**

I think the Biggest news to talk about is our recent fieldtrip to the Wakestone Knightdale Quarry. Just being allowed into this quarry for the first time in over a decade is cause for jubilation, but for things to go so smoothly that we were invited back, is cause for celebration! Thanks to all of you that were able to show up and show the managers of the quarry

*Continued on page 4*



## **May 2011 Field Trip Report – Wakestone Knightdale Quarry**

Compiled By George Harris from Tom Todaro and Bob Bendelow

The May field trip to Wakestone Knightdale Quarry went very well, and the club has been invited to come back at a future date.

There were several different minerals found, including prehnite, molybdenite, calcite, epidote, fluorite, and possibly beryl.

There were some interesting features in the walls that the manager called diabase dikes.

*Continued on page 4*



**Tar Heel Gem & Mineral Club, Inc.**

10609 Chelsea Drive  
Raleigh NC 27603

Joe Moylan – President  
jmoylan1002@nc.rr.com  
(919) 554-3175

Kenny Gay – V-President  
kenny.gay@ncdenr.gov  
(919) 604-2376

Walt Milowic – Secretary  
wmilowic@nc.rr.com  
(919) 327-3227

Corinne Hummel – Treasurer  
mchummel@mindspring.com  
(919) 779-6220

Bob Bendelow – Librarian  
& Committee Member  
r.bendelow@earthlink.net  
(919) 552-8175

Cyndy Hummel – Committee  
Member  
mchummel@mindspring.com  
(919) 779-6220

George Harris – Newsletter Editor  
GeorgeFHarris@yahoo.com  
(919) 674-0243

Tom Todaro – Field-Trip Coord.  
caribtomt@yahoo.com  
(919) 639-7798

**We're on the Web!**

See us at:

[www.tarheelclub.org](http://www.tarheelclub.org)

**Program & Refreshments**

REFRESHMENT SCHEDULE:

Coordinator: Jeanette Baugh (919) 522-9044  
[villagegems@yahoo.com](mailto:villagegems@yahoo.com)

June	Sarah and Barrett Redpath
July	Open
August	Ice Cream Social
September	Walt Milowic
October	Cyndy and Corinne Hummel
November	Jerry and Deborah Miller

PROGRAM SCHEDULE:

June	Silent Auction
July	Jeff Schlotman
August	Ice Cream Social
September	Open
October	Open
November	Open

Currently the Club reimburses members up to \$40 for bringing refreshments for our monthly meetings. We still need volunteers to bring refreshments for July. Thank you. Jeanette Baugh

**April Treasurer's Report**

March Ending /  
April Beginning Balance 13131.12

-----	
Deposits	
Dealers	10460.00
Dealers	505.00
Silent Auc	667.30
Hospitality	1136.35
Goedes	4904.50
Tees	455.00
Tees	60.00
Members	515.00
Members	80.00
Members	45.00
-----	
sub total	18828.15
-----	

Expenses / Checks Written	
Cash set up	435.00
Fri nite supper	1114.68
IMP newsletter	57.11
Geode Supplies	6.01
New geodes	1881.40
NC State Fair	10473.00
Storage	86.00
Postage	11.80
Speaker	50.00
Copy card	30.00
Mis Recpts	13.17
-----	
sub total	14158.17
=====	

April Ending /  
May Beginning Balance 17801.10

**June B-Day Members**

- Richard DeFilippo
- Orion Healy
- Kay Kimball
- Prep Maynard
- Tim Milowic
- Grant Schulz
- Angie Tunney



Membership applications may be mailed to:

Tarheel Gem & Mineral Club  
Attention: Treasurer  
10609 Chelsea Drive  
Raleigh, NC 27603

### Tar Heel G & M Club May Meeting Minutes

Tuesday, May 17, 2011

The meeting was called to order by Joe Moylan at 7:40.

Walt read the minutes. Bob Bendelow made a motion to accept the minutes as read. Cyndy seconded. Motion carried

Tom Todaro spoke about the next field trip. He asked if anyone knew why the quarry may have been closed to collectors. Kenny Gay said that someone had put up a ladder on one of the walls. The quarry will open at 9AM. Tom said we must be very careful, to make sure we are asked back.

Joe said there was also a trip to the Reel mine. He mentioned that Wakestone has amethyst and Kenny said some Autunite.

There was a vote on refreshments. Joe went over the three choices. Bob Bendelow made a motion that we reduce the amount for refreshments to \$40. There were four votes for no refreshments, 14 for reduced refreshments, and 2 for keep things the same. Walt seconded. Motion carried.

Jim Jin won the raffle and chose assorted slabs.

Joe chose the winners for the Wild Acres scholarships. The winners were Grant Schultz and Nancy Holland and the alternates were Randy Jones and Irene LaFortune.

Michaela and Nick Dillon each won a Best Buy certificate in the drawing for the children who worked at the show.

June's program will be a continuation of the auction.

Joe asked about the equipment and if anyone saw them in the newsletter. The equipment may be a silent auction at the next meeting. Joe has some other equipment that will be in the newsletter and at the next meeting also.

The board meeting will be next Tuesday at 6:30.

The auction collected \$637. There being no other new business,

Debbie Miller made a motion to close the meeting and Cyndy seconded.

The meeting adjourned at 8:17.

Respectfully submitted, Walt Milowic

### 2011 Show Report

**Dealer Income**

Dec-10	2,185.00
Jan-11	1,830.00
Jan-11	1,750.00
Feb-11	2,082.50
Apr-11	10,460.00
May-11	505.00

18,812.50

Adj figure 200.00

18,612.50

**Expenses**

NC State Fair	12,473.00
Friday Dinner	1,114.68
N & O Ads	1,081.71
Postage	733.50
Food Upstairs	362.65
Tires	227.95
Banners	199.83
Radio Adv.	200.00
Post Cards	164.48
PVC Pipe / signs	68.49
Ties & badges	50.10

16,717.87

Dealer Income 18,612.50

Expenses 16,717.87

Cleared 1,894.65

**Silent Auction**

Income	667.30
Seed money	50.00
=====	=====
Cleared	617.30

**Hospitality Booth**

Income	1,136.35
Seed money	75.00

1,061.35

**Expenses**

Rocks	59.38
Ties	11.80
=====	=====
Cleared	990.17

**Geodes**

Income	4,904.50
Seed money	310.00
=====	=====
	4,594.50

**Expenses**

Geodes	1,881.40
Motor etc.	208.04
=====	=====
Cleared	2,505.06

**Add all Cleared Amounts**

Dealer / Expenses	1,894.65
Silent Auction	617.30
Hospitality Booth	990.17
Geodes	2,505.06
=====	=====
Total Cleared	6,007.16

## President's Report

Continued from page 1

what rockhounds are all about!

During the fieldtrip there was a very interesting mineral specimen found by Bob Bendelow. Final positive identification may take a while but from all appearances Bob may have found some Beryl. This is really quite significant. Beryl has been reported and recorded from Wake County for quite some time, but have you ever seen a piece? I have never seen a specimen of Beryl from Wake County in my life. This is a first!

So, if positive identification of Bobs' find is Beryl, there will be two "Firsts" achieved by the club for us to celebrate. Permission to enter the Wakestone Quarries again and the first Beryl specimen to be found in Wake County in a very long time!

We have the positive but persuasive perseverance of Tom Todaro to thank for these opportunities. Tom has been doing a great job contacting and establishing a line of communication with the managers and owners of the quarries all over the state and, with the help of a little Bojangles, has established a mutual respect between all parties.

Tom, we know you enjoy doing it but realize it's a lot of time and energy and we just can't thank you enough! We look forward to jumping on the bus again with you as soon as you say!

I would love to have one meeting later this year where we re-cap the years fieldtrips with pictures and specimens. And just a word to those members that have never been on a fieldtrip and may now be thinking about it, it's going to be HOT these next few months. Be Prepared! And it's still going to be HOT!

Other than that, the June Meeting is going to be an Auction! Non-members are welcome. This would be a good opportunity to bring a friend. Invite someone you know that's interested in rocks,( and may want to bid on a few). And have some fun.

There are about a dozen large cabinet size Herkimer specimens and about two dozen smaller ones to be auctioned off. Two dozen nice Hourglass Selenite crystals and lots of iridescent radiating pyrophyllite specimens and no telling what all else.

See You at the Meeting,  
Joe Moylan

## May Field Trip Report

Continued from page 1

**Molybdenum** ([/ˌmɒlɪbˈdiːnəm/](#) *MOL-ib-DEE-nəm* or [/məˈlɪbdɛnəm/](#) *mə-LIB-di-nəm*), is a Group 6 chemical element with the symbol Mo and atomic number 42. The name is from Neo-Latin Molybdaenum, from Ancient Greek Μόλυβδος *molybdos*, meaning *lead*, itself proposed as a loanword from Anatolian Luvian and Lydian languages, since its ores were confused with lead ores. The free element, which is a silvery metal, has the sixth-highest melting point of any element. It readily forms hard, stable carbides, and for this reason it is often used in high-strength steel alloys. Molybdenum does not occur as the free metal on Earth, but rather in various oxidation states in minerals. Industrially, molybdenum compounds are used in high pressure and high temperature applications, as pigments and catalysts.

Molybdenum minerals have long been known, but the element was "discovered" (in the sense of differentiating it as a new entity from minerals salts of other metals) in 1778 by Carl Wilhelm Scheele. The metal was first isolated in 1781 by Peter Jacob Hjelm.

Most molybdenum compounds have low solubility in water, but the molybdate ion  $\text{MoO}_4^{2-}$  is soluble and will form if molybdenum-containing minerals are in contact with oxygen and water.

Molybdenum-containing enzymes are used as catalysts by some bacteria to break the chemical bond in atmospheric molecular nitrogen, allowing biological nitrogen fixation. At least 50 molybdenum-containing enzymes are now known in bacteria and animals, though only the bacterial and cyanobacterial enzymes are involved in nitrogen fixation. Due to the diverse functions of the remainder of the enzymes, molybdenum is a required element for life in higher organisms (eukaryotes), though not in all bacteria.



**Pictures for June Auction**



Small homemade tumbler with motor



Large homemade tumbler, no motor



Hot Dop pot



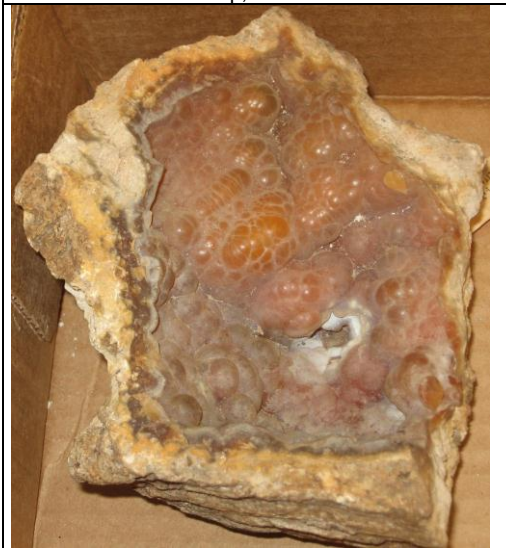
Flat Lap, no motor



Box of sanding discs for flat lap



Vibra sonic and attachments



Coral specimen



Hourglass Selenite crystals



Herkimer specimens

**Upcoming Events**

**TAR HEEL GEM & MINERAL CLUB - FIELD TRIP NOTICE**

<b>FIELD TRIP DAY / DATE</b>	SATURDAY, June 25th
<b>TIME:</b>	09:00 am – 2:00 pm
<b>QUARRY OPERATOR</b>	MARTIN-MARIETTA
<b>QUARRY NAME</b>	Asheboro Quarry
<b>QUARRY ADDRESS:</b>	2757 Hopewood Road, Randleman, NC
<b>QUARRY TELEPHONE:</b>	336-672-1501
<b>QUARRY IN-CHARGE</b>	Steve Carter
<b>TAR HEEL TRIP COORD</b>	Thomas Todaro, 919-349-9143 (M), 919-639-7798 (H) <a href="mailto:caribtomt@yahoo.com">caribtomt@yahoo.com</a>

**REQUIRED**

1. Everyone must comply with any and all safety requirements set forth by Martin-Marietta.
2. Everyone is to stay away from quarry edges.
3. No climbing on rock face's.
4. Everyone must have and wear a hard-hat.
5. Everyone must have work boots with steel toe would be better.  
- Note: Sorry but do not show up wearing sneakers and expect to go down into the quarry.
6. Everyone must have safety goggles or glasses.
7. Everyone must sign in at the quarry office.
4. Dress according to the weather, expect it to be cold. It is always easier to take clothes off then put stuff on that you don't have.
5. Camera.
6. Magnifying glass or eye loop.
7. Food / snacks.
8. Drinking water to stay hydrated.
9. Ask for help to load your take home rocks, as we don't want to see anyone hurt their back.
10. Please be prompt as the quarry operator is coming in on his day off to host our club.
11. Be sure to thank the quarry operator upon leaving as we want to leave a good impression so as we can come back.

**EXTRA STUFF:**

1. Feel free to bring buckets, picks, hammers, shovel, hand cart, rags, crow bar, etc.
2. Sorry, but children under 18 yrs are not permitted per the quarry manager
3. Bring a change of clothes in case you get wet.
12. Temperatures in the quarry will be excessive MAKE SURE you bring plenty of fluids. It also doesn't hurt to bring a small cooler with water to dip a face towel into for cooling.
13. Be sure to arrive around 08:45 AM.
14. Have Fun!

As I have not ever been to this Martin Marietta quarry, I have no information as to what can be found there. As this quarry is east of the foothills of the NC Mountains I would suspect the usual quartz, calcite, pyrite, mica, garnets in chist, granite, etc.

**Directions:**

[Raleigh, NC](#)

1.	From Raleigh, WADE AVE, Merge onto US-1 S toward I-40 E / HILLSBOROUGH ST / SANFORD	7.6 mi
2.	Merge onto US-64 W via EXIT 98B toward PITTSBORO / ASHEBORO.	57.4 mi
3.	Turn RIGHT onto E PRESNELL ST.	3.8 mi
4.	Merge onto I-73 N / I-74 W / US-220 N toward GREENSBORO.	3.4 mi
5.	Take the PINEVIEW STREET exit.	0.3 mi
6.	Keep RIGHT at the fork to go on PINEVIEW ST.	0.1 mi
7.	Take the 1st RIGHT onto HOPEWOOD RD.	0.6 mi
8.	2757 HOPEWOOD RD is on the RIGHT.	

[Martin Marietta, 2757 Hopewood Rd, Randleman, NC](#)

Happy Rockin !

Tom Todaro

Tar Heel Gem & Mineral Club Field Trip Chair 919-349-9143,

[caribtomt@yahoo.com](mailto:caribtomt@yahoo.com)

## UPCOMING SHOWS

17-19, 2011: Asheville, NC - Southern Appalachian Mineral Society. Asheville Gem Fest 2011, Pack Place, 2 South Pack Square (Downtown Asheville). Hours: Fri & Sat 10 AM - 6 PM, Sun 12 noon - 5 PM. Free admission, minerals, gems, jewelry, fossils, kids' activities, silent auction, door prizes. Contact (828) 254-7162 or [www.colburnmuseum.org](http://www.colburnmuseum.org)

Jul 1-3, 2011: Raleigh, NC. Gem & Jewelry Show. NC State Fairgrounds, Scott Building. Dealers will offer a variety of gems, jewelry, crystals, minerals and beads for show and sale. Hours are Friday, Saturday and Sunday, 10 a.m. to 5 p.m. Free admission. 941-954-0202 [www.frankcoxproductions.com](http://www.frankcoxproductions.com)

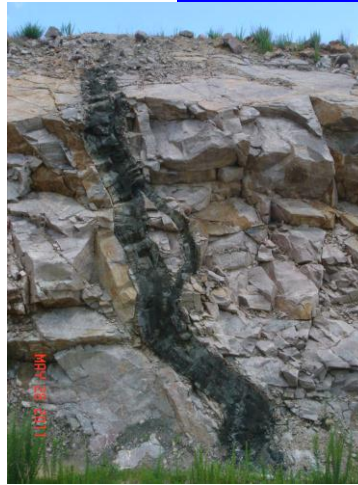
Aug 4-7, 2011. Grassy Creek Gem & Mineral Outdoor Festival. Parkway Fire Department, Spruce Pine, N.C. Each year, running concurrently with the Mineral and Gem Festival is the Grassy Creek Festival, presented outdoors at Parkway Fire Department (in the Grassy Creek area of Spruce Pine). <http://sprucepine.com>

Sep 2-5, 2011: Raleigh, NC. Treasures of the Earth Gem, Mineral & Jewelry Show. NC State Fairgrounds, Scott Building. Show includes 14K gold and sterling silver jewelry, loose gems, pearls, beads and findings, minerals, crystals, fossils, remounts and wire wrapping by jewelers on site. Jewelers and wire wrappers on site that can do remounts, design or repair jewelry. Admission: Adults \$4 - under 16 admitted free. Show hours: Friday: noon - 7, Saturday: 10 a.m. - 6 p.m.; Sunday: 11 a.m. - 6 p.m.; Monday: 10 a.m. - 5 p.m. (804) 746-7663 [tote1523@treasuresoftheearth.net](mailto:tote1523@treasuresoftheearth.net)

Dec 10-11, 2011: Franklin, TN. Mid-Tennessee Gem & Mineral Society. Gem, Jewelry, Mineral, Fossil Show and Sale, Williamson County AgExpo Park, 4215 Long Lane, Franklin, TN 37064. Hours: Sat 9-6, Sun 10-5. Admission \$4 (2-Day Pass \$6.00), students 18 and under \$1, children under 12 free with adult. Show contacts: John Stanley, Show Chair, (615) 885-5704 or Steve Henegar, Dealer Chair, (615) 714-3194. Email contact: [show@mtgms.org](mailto:show@mtgms.org) <http://www.MTGMS.org/Show.htm>

## May Field Trip Pictures

Dikes at Wakestone Knightdale Quarry



## Vugsites

The following are some links to Web-Sites that may interest some of our members:

<http://www.amfed.org> / <http://www.amfed.org/sfms> These are the official sites for the organizing body that the Tar Heel Gem & Mineral Club is founded under. I would strongly urge all members to check them out on a regular basis.

[http://www.amfed.org/sfms/lodestar\\_newsletter.html](http://www.amfed.org/sfms/lodestar_newsletter.html) The SFMS Lodestar Newsletter

<http://www.carolinageologicalsociety.org/CGS/Home.html> This site provides numerous downloadable field-trip guide books, maps, and charts of the Carolinas. It will prove to keep any avid rock hound busy for years. Great Site!

[http://www.ncminerals.com/ncmineralswebsite\\_files/page0011.htm](http://www.ncminerals.com/ncmineralswebsite_files/page0011.htm) And while we are on the subject, try this link. Its titled: Links of Interest to Rock hounds in NC; It will take you to a list of links for North Carolina gems and minerals.

<http://www.rocksforkids.com/> Just like the name says, A nice place to steer the younger members.

information & photographs of over 6300 specimens from the Glenn & Martha Vargas Gem & Mineral Collection.

<http://www.rockhoundlounge.com> Scott Laborde, a club member maintains his own web site that might be of interest to people collecting in and around Wake County.

[http://www.msnbc.msn.com/id/29726500/ns/technology\\_and\\_science-science](http://www.msnbc.msn.com/id/29726500/ns/technology_and_science-science) This site highlights a half dozen of the most recent significant fossil finds.

<http://appmodo.com/13971/mole-quest-for-the-terracore-gem-app-review-for-the-iphone-and-ipod-touch/> If you have an iphone or an ipod touch, this rock-hounding may be the game for you.

I would like to encourage all members of the THG&MC that maintain their own presence on the internet to send me a link to their site to be published in future Vugsites so that other club members may learn and enjoy the craft, the art, the interests that many of us have in common.

